

# MOTA®

## Battery Case for iPhone 5

### Specifications & User Manual



#### Product specifications:

ITEMS	SPECIFICATIONS	REMARK
Input Voltage	5.0V/1.0A(Max)	Charge
Output Voltage	5.0±0.25V/1 A	
Nominal Capacity	2000mAh	
Adaptable for	iPhone 5 16G, 32G, 64G	
Cell Type	Li-polymer / 2000mAh	
Standby Time	Up to 225h	
Talk Time	Up to 8h	
3G Surfing Time	Up to 8h	
Audio Play Time	Up to 40h	
Video Play Time	Up to 10h	
Dimensions	7.3mm (T) x 61mm (W) x 128.5mm (L)	
Color	Silver/Black(customized color optional)	
Weight	62g	

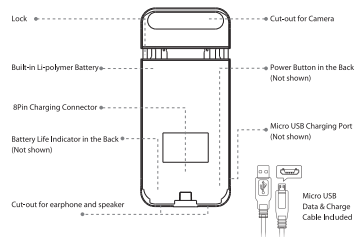
#### Features:

- Built-in Li-polymer battery with 2000 mAh capacity nearly doubles the battery life time of your iPhone 5.
- Protective IC Circuit efficiently prevents short-circuits, over-charges, and malfunctions.
- Cut outs for all the iPhone 5 features, use your iPhone without removing it from the case.

#### Tip:

To charge both your MOTA Battery Case and your iPhone 5, and sync with iTunes (optional), insert your iPhone 5 into the battery case and connect to computer using the provided charging cable.

#### Illustration:



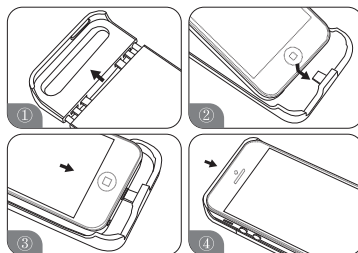
#### Charging the Battery Case:

- Connect the provided Micro USB charging cable to any USB power source such as a computer to begin charging.
- Charge the battery case until battery lights at the bottom of the case indicate full.

#### Use the Battery Case to Charge your iPhone 5:

- Insert the iPhone 5 into the battery case.
- Press and hold the on/off button on the MOTA Battery Case for 3 seconds to charge your iPhone.
- Turning the battery case off when iPhone is fully charged will significantly save the charging capacity. Press ON/OFF (hold for 3 seconds) to power off the battery case.
- Press on/off button (≤ 2s) to indicate the remaining capacity of the built-in battery in power pack.
- When the power pack is fully drained by your iPhone, the iPhone charging icon will revert to its normal usage.

#### Installation:



#### Battery Life Indicators:

MODE	CHARGING			
	LED1	LED2	LED3	LED4
Power < 25%	BLINKING	OFF	OFF	OFF
25% ≤ Power < 50%	ON	BLINKING	OFF	OFF
50% ≤ Power < 75%	ON	ON	BLINKING	OFF
75% ≤ Power	ON	ON	ON	BLINKING
FULL	ON	ON	ON	ON
MODE	DISCHARGING			
	LED1	LED2	LED3	LED4
75% ≤ Power ≤ 100%	ON	ON	ON	ON
50% ≤ Power ≤ 75%	ON	ON	ON	OFF
25% ≤ Power ≤ 50%	ON	ON	OFF	OFF
Power ≤ 25%	ON	OFF	OFF	OFF
Empty	OFF	OFF	OFF	OFF

#### Package Contents:

- Battery Case
- Micro to USB Cable
- User Manual

#### Warning:

- To extend storage, please fully charge the power pack before first use.
- Be cautious of excessive drops, abrasions, or other impacts to the power pack. Please stop using immediately if any abnormal events occur.
- Do not expose the power case to wet or damp conditions, please keep it dry.
- Do not use near heat emitting appliances.
- It is recommended to use the included USB Cable to charge the power pack, other cable may result in compatibility issues.
- Do not attempt to replace any spare parts of the power case.
- It is normal for the power pack to become warm when charging due to high output.
- Never dispose of the power pack in dustbin, please bring used batteries to your local battery recycling center.
- Do not connect the power pack to iPhone if it has not been used or charged for a long time.

iPhone® is a registered trademark of Apple® Inc.  
Mota® is not affiliated to Apple® Inc.

MOTA® is a trademark of UNorth® LLC.  
Copyright © 2013 by UNorth, LLC. All Rights Reserved.  
www.MOTA.com